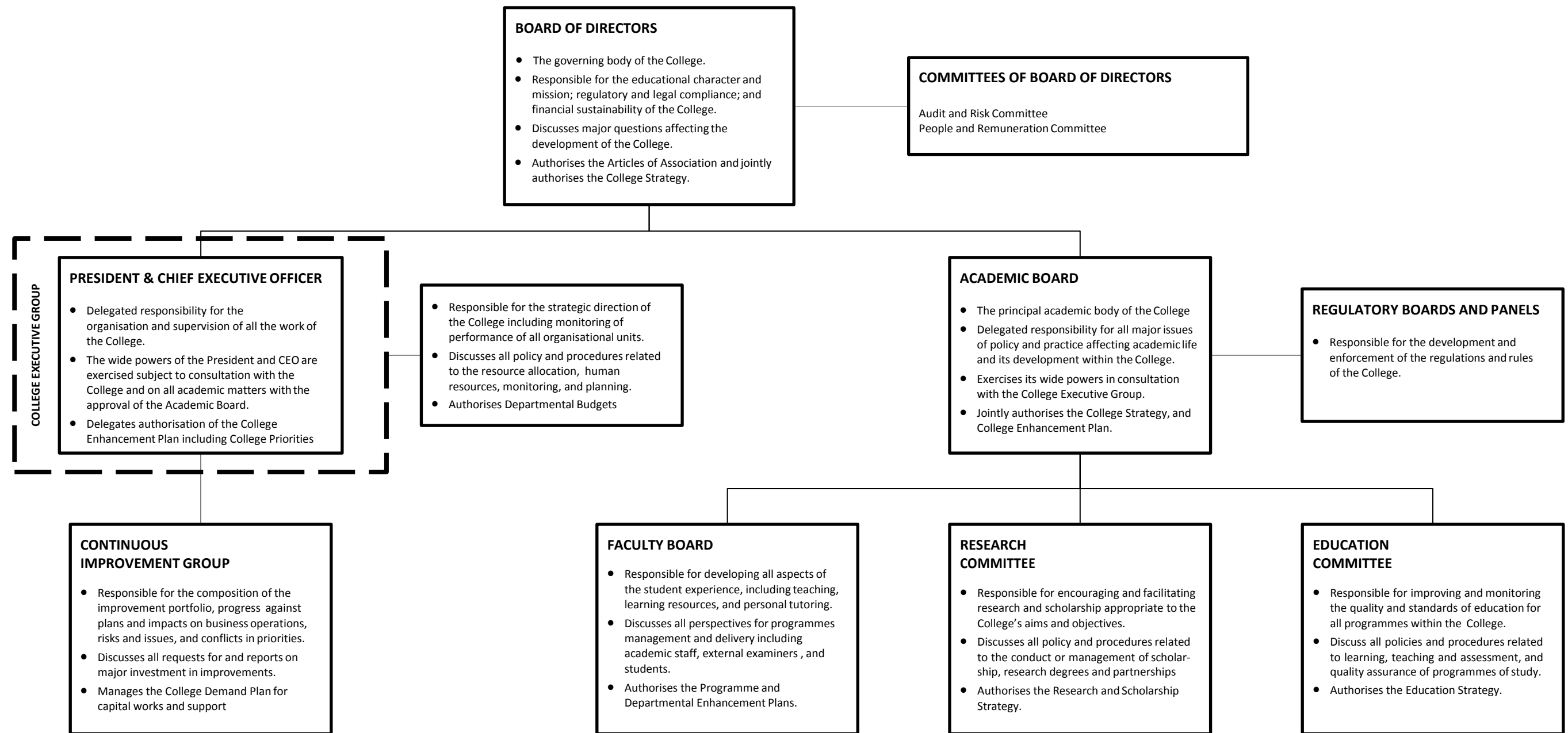


Primary College Governance Structures



Term	Definition
Committee	A formally appointed deliberative and representative group of people where decisions are made by democratic means, and who are responsible for deciding the direction of the academic community within a specific area defined by either governing documents or specific delegation from its parent body
Board	A formally appointed quasi-judicial and deliberative representative body where decisions are made on the basis of evidence before it, and from which there is neither review of decisions nor automatic right of appeal.
Panel	A formally appointed quasi-judicial and deliberative representative body where decisions are made on the basis of evidence before it, and from which there is an automatic review of decision and right of appeal.
Group	A deliberative and representative group of people where decisions are made by democratic means, and who are responsible to advise on a finite task or area of responsibility on behalf of the academic community.
Forum	A deliberative group of people to explore and feedback on a finite task or area of responsibility on behalf of the academic community, in many cases forums will include independent members. Forums are not usually a decision-making body but are convened to explore issues and provide information on which decisions may be made.

COLLEGE EXECUTIVE GROUP (CEG)	
- President and Chief Executive Officer	- Academic Registrar
- Provost and Chief Academic Officer	- Director of Marketing and Recruitment
- Chief Finance Officer	- Director of Information Technology
- Chief Operating Officer	- Director of Human Resource
- Pro-Provost (Student Engagement and External Engagement)	
- Executive Dean/Pro-Provost (Academic Delivery)	