

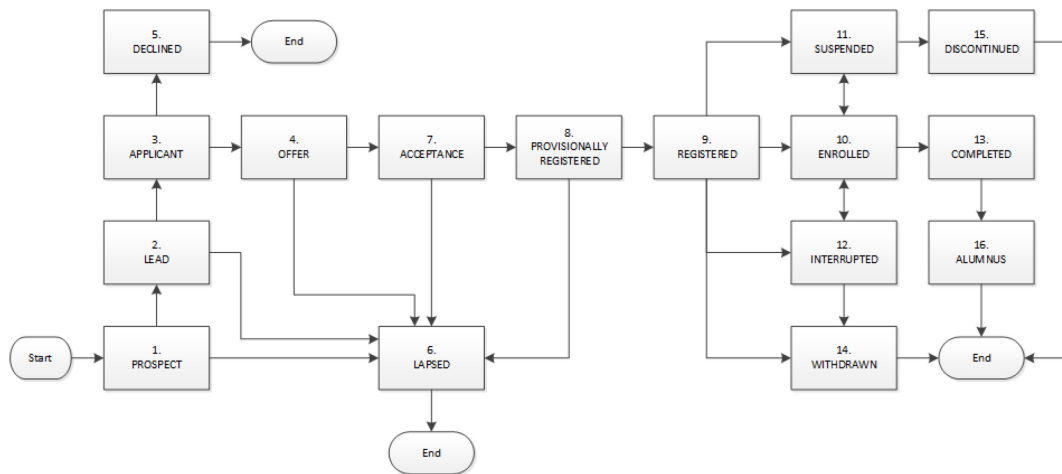
SCHEDULE H: STUDENT STATUS

All prospective, current and past students go through different stages in their study with the College. To understand which stage a student is at in their study of a programme or module the College gives them a 'status'. These 'statuses' enable the College to discuss specific groups of students and to apply specific policies and regulations to these students.

'Registration status' describes which stage a student is at in their study on a programme.

'Enrolment status' describes which stage a student is at in their study on a module.

Registration status (These maps and descriptions will be updated)



Enrolment status (These maps and descriptions will be updated)

